



**galileo**  
RESOURCES PLC

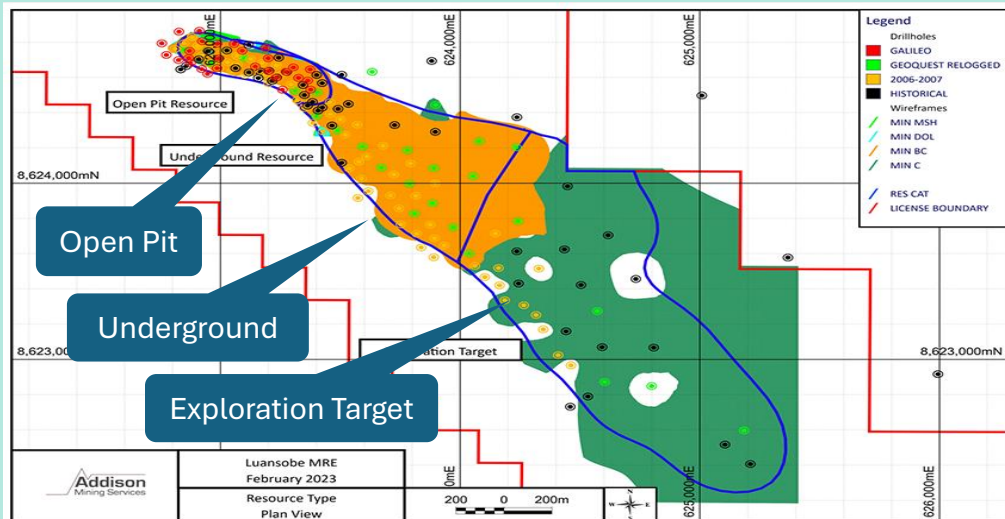
Advancing high-quality mineral assets for the energy transition.

Through careful project acquisitions in stable jurisdictions Galileo Resources PLC (AIM:GLR) advances scalable copper and battery metals projects through innovative, data-driven approaches.

- **The Luansobe Project** is located on the **Zambian Copperbelt**, some 15km northwest of the Mufulira Mine, and is positioned on the northwestern limb of the northwest-southeast trending Mufulira syncline.
- The Luansobe deposit is located across two small scale mining licences (**34543-HQ-SML and 34545-HQ-SML**), which are held by Galileo Resources plc's (Galileo's) Joint Venture (JV) partner, Statunga Investments Limited (in which Galileo holds a **75% interest**).
- Both these mining rights were **issued in 2024 and are valid for the next ten years**.
- The 2022 Mineral Resource Estimate was updated and **optimised in 2024** by independent Resource consultants

## Summary of 2022 Independent Mineral Resource Estimate

Resource Type	Cut Off (% Cu)	Grade (% Cu)	Tonnes (Mt)
Open Pit	0.25	1.00	5.8
UG	1.00	1.50	6.3



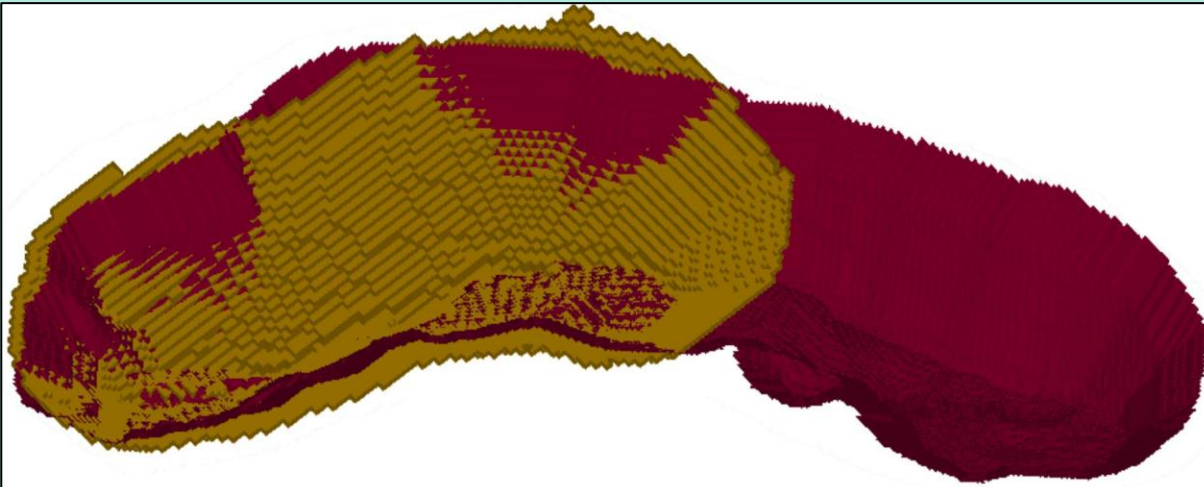
## Block Model Evaluation at Different Cut-Offs

- Pit optimisation results are time sensitive as a result of economic factors being included within the Mine Design Criteria (i.e., the base assumptions for the pit optimisation).
- The 2024 evaluation therefore elected to ignore the Mineral Resource estimate split (i.e., between open pit and underground) as it was defined through the use of a pit optimisation using 2022 metal prices and costs.
- As Sound Mining's pit optimisation relies on the block model supporting the 2022 Mineral Resource estimate, the quantity of potential mineralised material within the block model was estimated through the evaluation of the block model at different copper cut-off grades

## 2024 Block Model Evaluation at Different Cut-Offs

Cut Off (% Cu)	Grade (% Cu)	Tonnes (Mt)
0.25	0.98	22.85
1.00	1.51	8.64

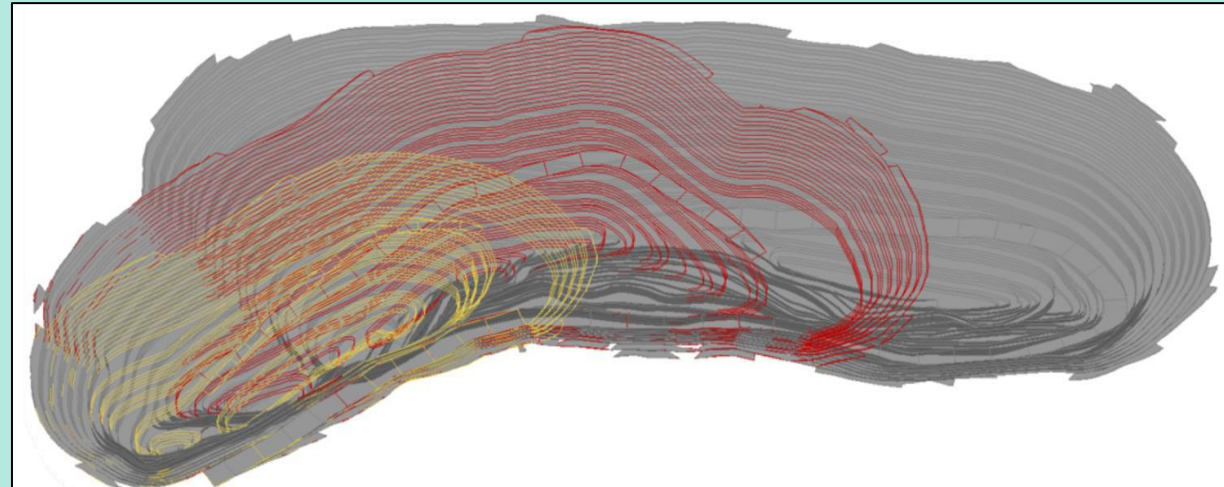
Isometric View of the 2022 Mineral Resource Pit Shell and the July 2024 Pit Optimisation Ultimate Pit Shell



■ July 2024 Ultimate Pit Shell  
■ 2022 Mineral Resource Pit Shell



Isometric View of the Three Defined Pushbacks



— PB1  
— PB2  
— PB3



- Several **copper plants** located close to the Luansobe Project have **expressed interest in securing long-term feedstock** for processing
- **Various proposals are under investigation**
- **Further drilling to provide geotechnical data for optimised pit design was completed in 2025** along with further metallurgical test work
- Site operations are ongoing as part of the mine development plan

# Western Foreland - Drill Ready

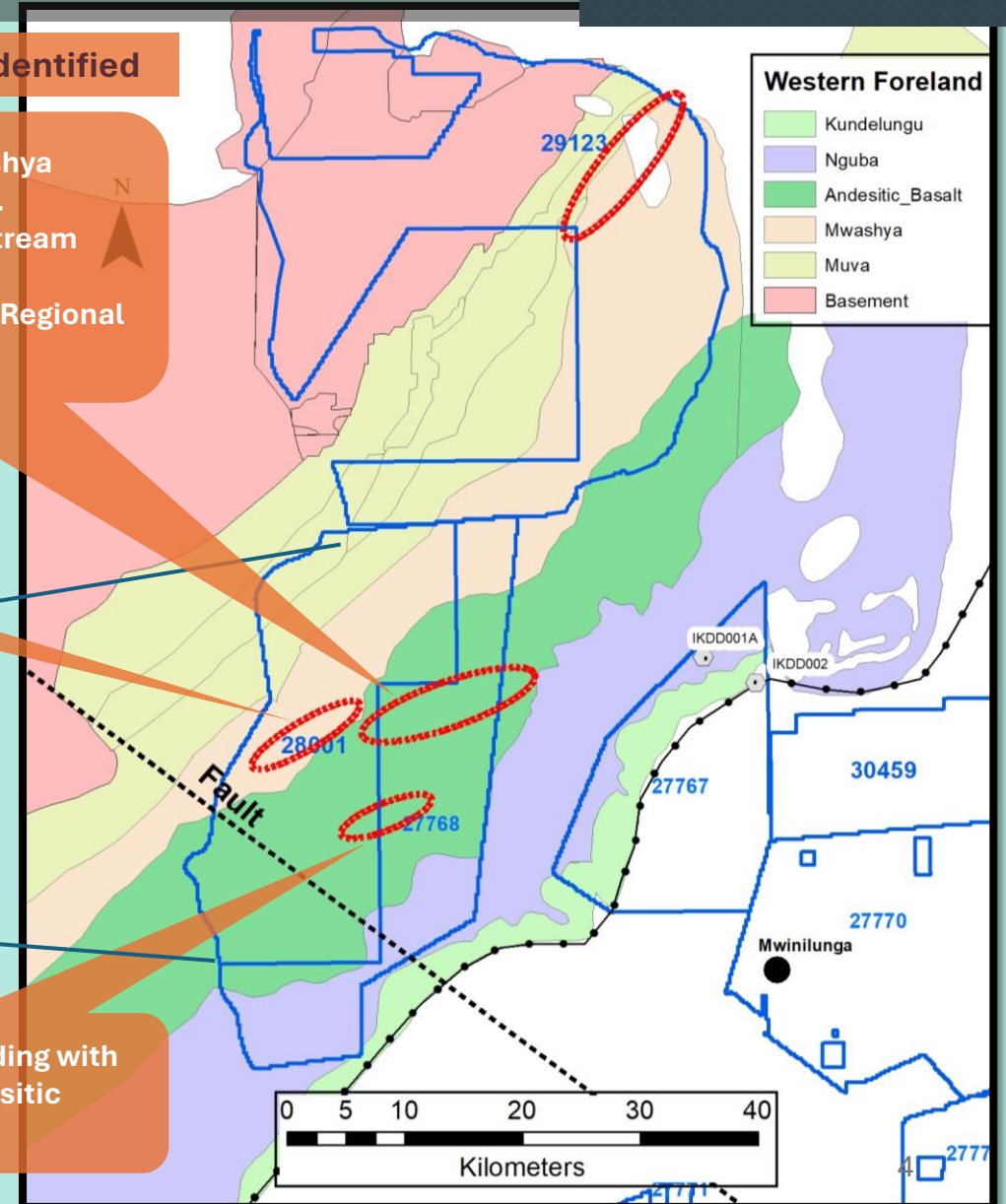
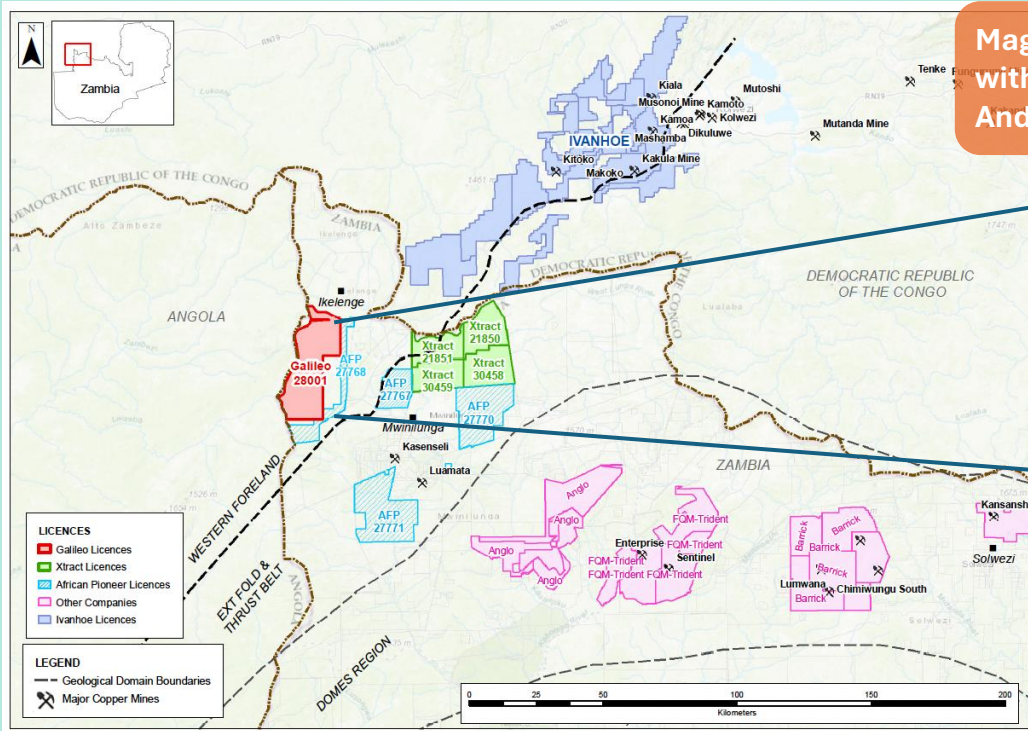
- Large-scale **exploration licence 28001** is located on the border between NW Zambia and Angola
- **Along strike of the world famous Kamao-Kakula copper mines** in DRC and within the projected extension of the **Western Foreland terrane**
- Exploration over Licence 28001 has revealed **several drill-ready targets** for follow up

## Several Drill Ready Targets Identified

Andesitic basalt – Upper Mwashya (oxidized sandstone) Interface. Coinciding with EM high and Stream Sediment Anomaly. Close Spatial Correlation with Regional Scale Fault.

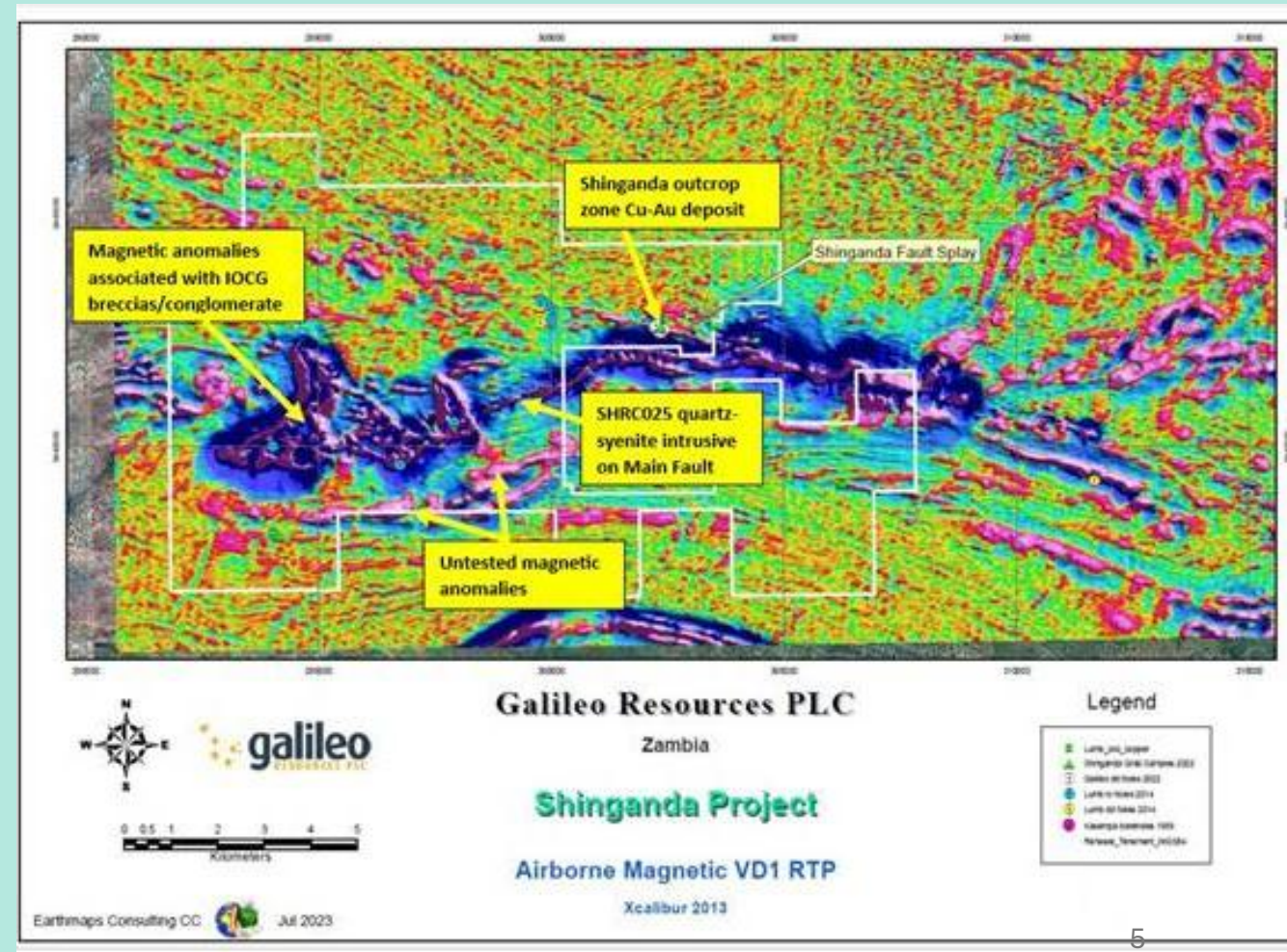
Magnetic Low coinciding with EM High, within Andesitic Basalt

Magnetic Low coinciding with EM High, within Andesitic Basalt



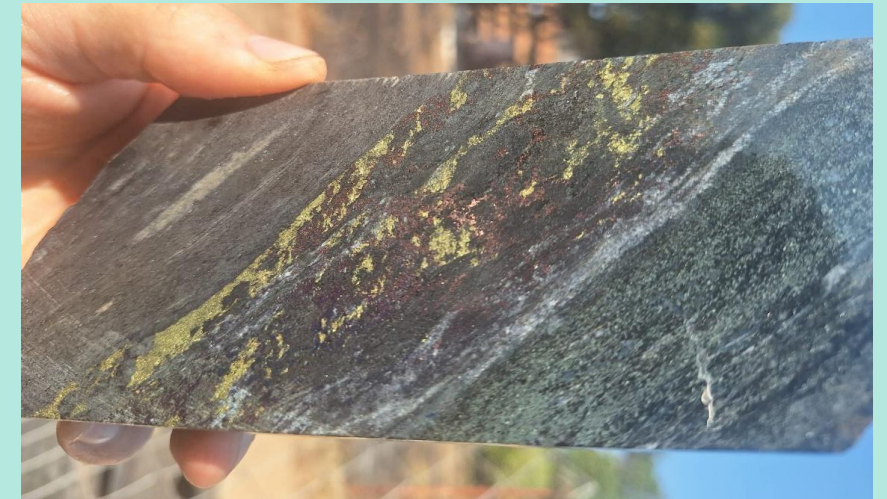
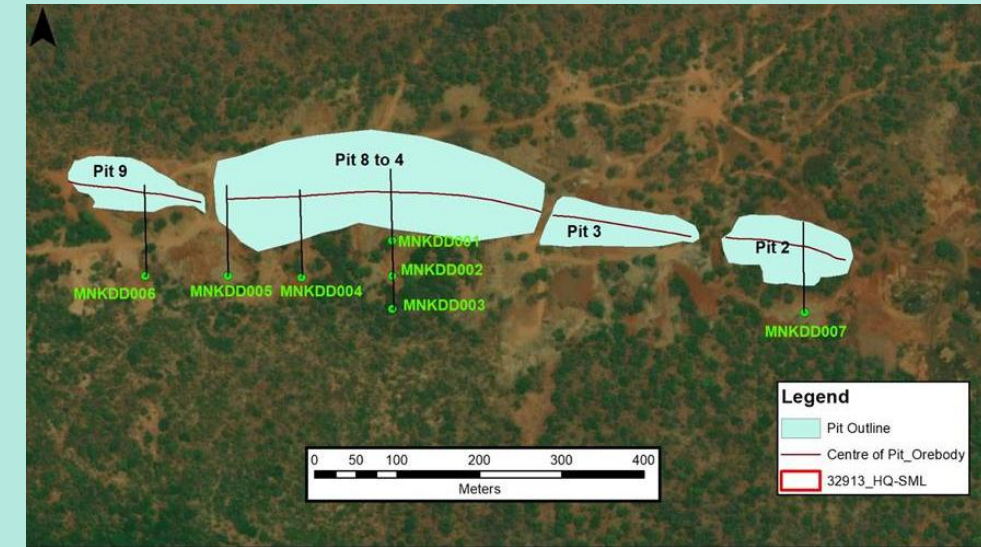
## Prospective for Iron Oxide Copper-Gold (IOCG) Mineralisation & Small-Scale Open Pit Mining Opportunity Currently Under Investigation

- **75% interest** in Zambian Large Scale Exploration Licence No. 22990-HQ-LEL
- Host to the **prospective Shinganda Main Fault and Fault Splay** that is **intermittently mineralised over 20km of strike**
- Four phases of drilling completed
- **350m x 150m shallow resource defined** by Phase 1 & 3 drilling at Shinganda **potentially amenable to open pit extraction**
- **Evaluation underway to optimise a small-scale open pit mining operation** subject to ongoing research and estimation
- **Drilling has identified many diagnostic characteristics associated with IOCG deposits**, including structural control, evidence of hydrothermal mineralisation and alteration, and an abundance of hematite – magnetite alteration.



# Molefe Mine Project – Copper Production & Development

- In November 2025 Galileo entered a **co-operation and project development agreement** with Jubilee Metals Group PLC in relation to the Molefe Copper Mine in Zambia. (AIM:JLP, Altx:JBL) ("Jubilee").
- Under the terms of the agreement, Galileo can earn up to a **23.75% interest in the mine** by funding a **resource development and exploration programme totalling US\$700,000**. Upon completion of Galileo's earn-in, Jubilee will retain a 71.25% interest, while the remaining 5% will be held by a local Zambian company.
- Jubilee's current capital investment into the Molefe Mine is secured through a preferential earnings right until its investment has been recovered fully from Molefe Mine's future earnings.
- **The Molefe Mine is an open-pit copper operation** consisting of multiple near-surface pits that were initially developed as separate test pits. **To date, only Pit 5 has been fully developed and is currently operating as a single open pit, with a mining rate of 80,000 tonnes per month (tpm).**
- Under the collaboration agreement the Molefe Mine **will to be placed on an accelerated development pathway**, with the immediate objective to maintain the current production profile for 3 months, a mid-term 6-month aim to replace depleted resources and in the longer-term, implementation of a programme of regional reconnaissance drilling to extend the life of mine.
- The Agreement offers the potential for exploration and development to be expanded into further properties to replicate the success of the Molefe Mine



# Kalahari Copperbelt - Several Advanced Targets

Emerging Copper region in Botswana prospective for Motheo style sediment hosted copper mineralisation

**PL253 – Copper mineralisation identified in 2025 drilling.** Several drill targets identified that are closely aligned with targets on the adjacent Cobre licences.

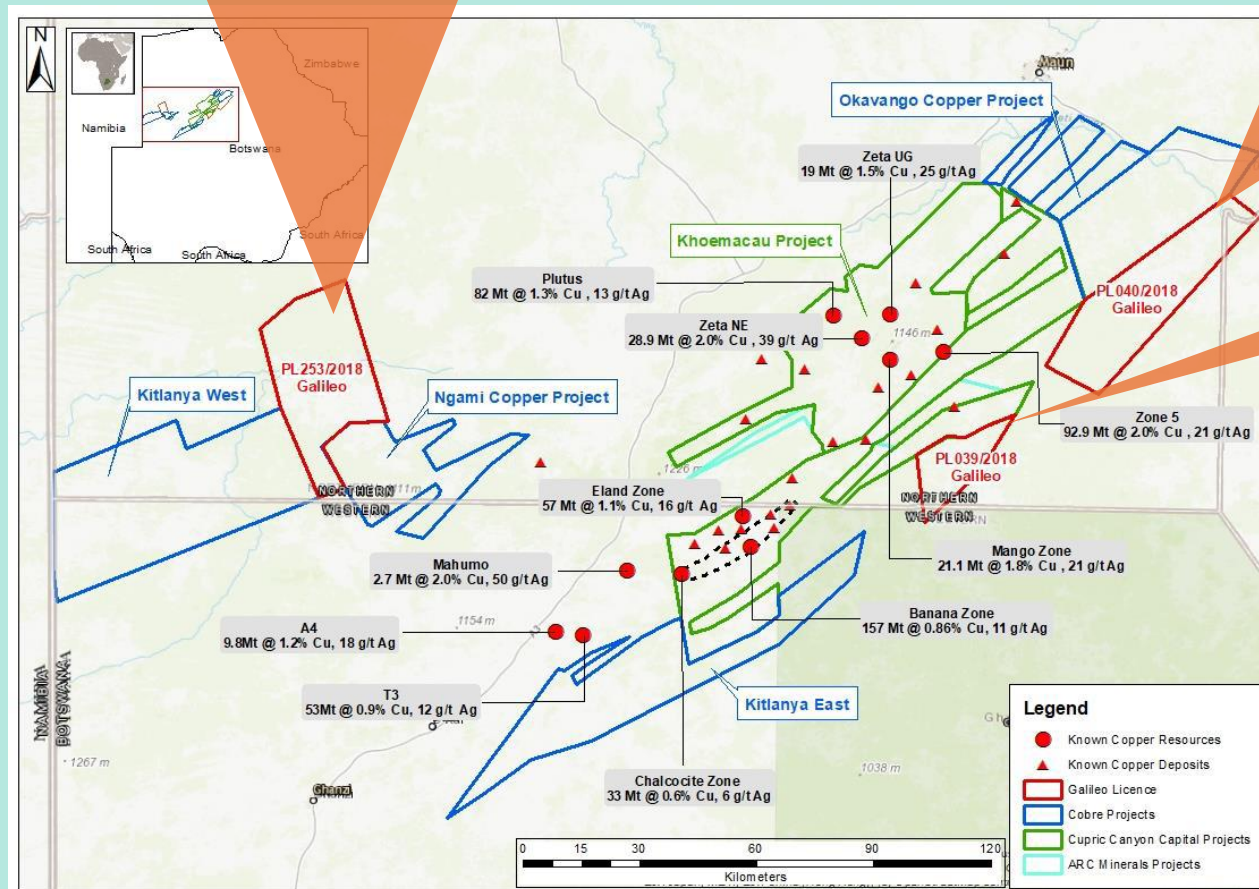
## PL040

Three geochemical targets have been identified, including a southern target which extends for over 2.8km

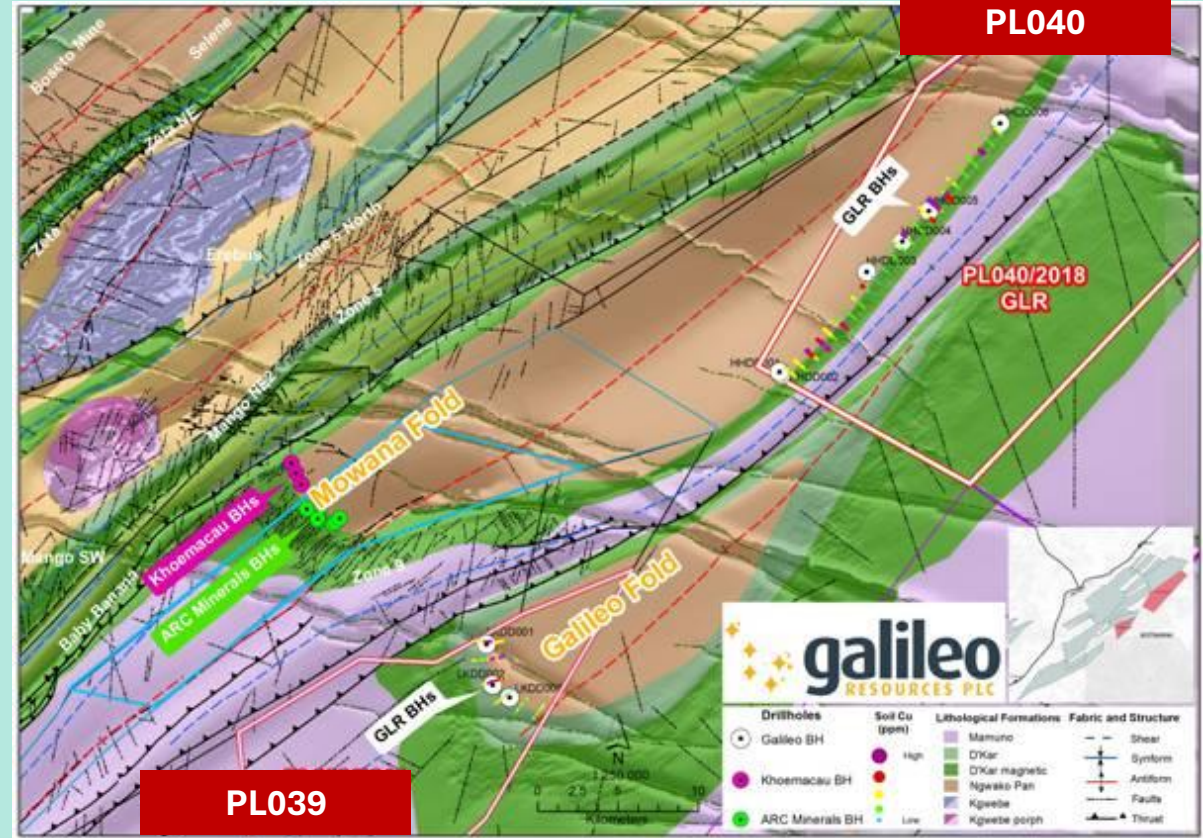
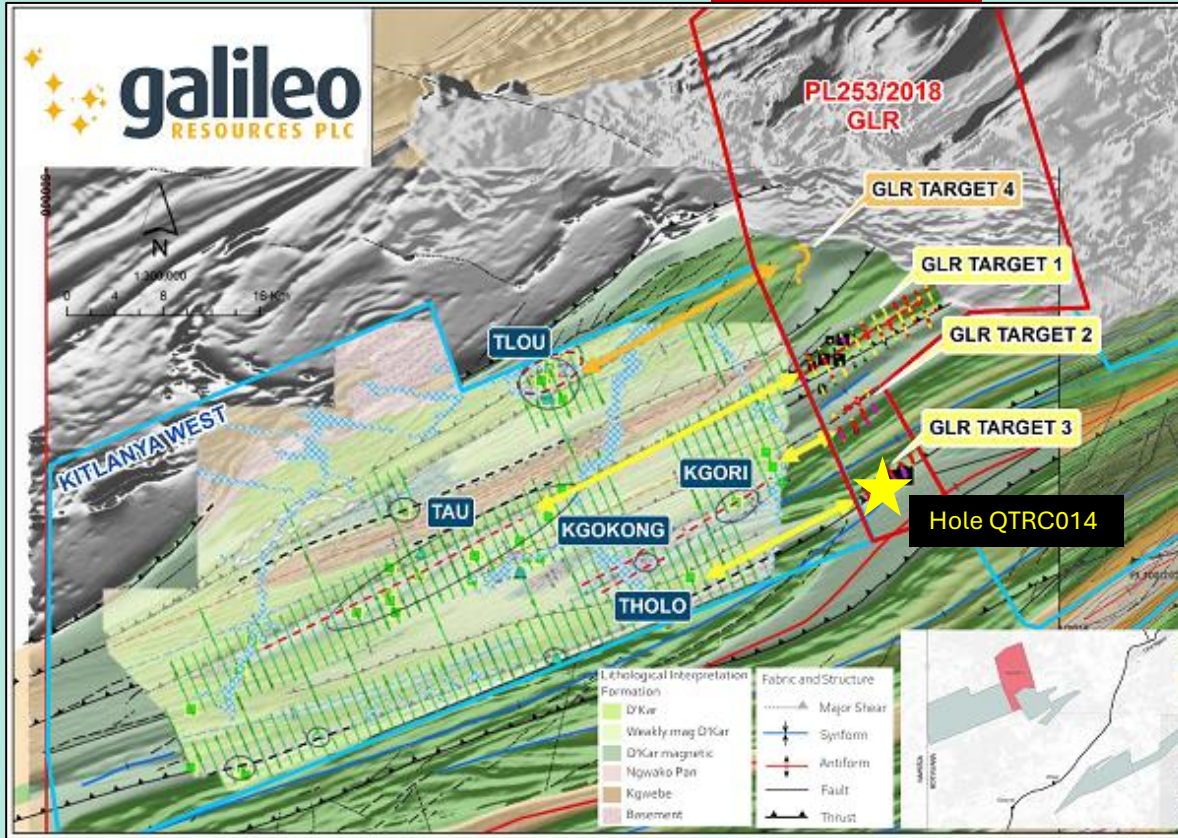
## PL039

Surface soil anomaly associated with the plunge nose of the Galileo Fold Structure

- Three priority licences **100% owned by Galileo** (PL253/2018, PL039/2018 and PL040/2018)
- **RC drilling on PL253 in late 2025 intersected intermittent, visible copper oxides in rock chips in the form of malachite and chrysocolla, returning a 49m anomalous copper interval from 66m downhole in drillhole QTRC014, including a higher-grade intercept of 5m @ 0.34% Cu from 79m, and a peak 1m assay of 0.84% Cu.**
- **The confirmation of copper oxide mineralisation associated with the prospective D'Kar Formation host rocks represents a highly encouraging result** from the first drilling on the target which is blanketed by sand cover



# Kalahari Copperbelt - Regional Prospectivity



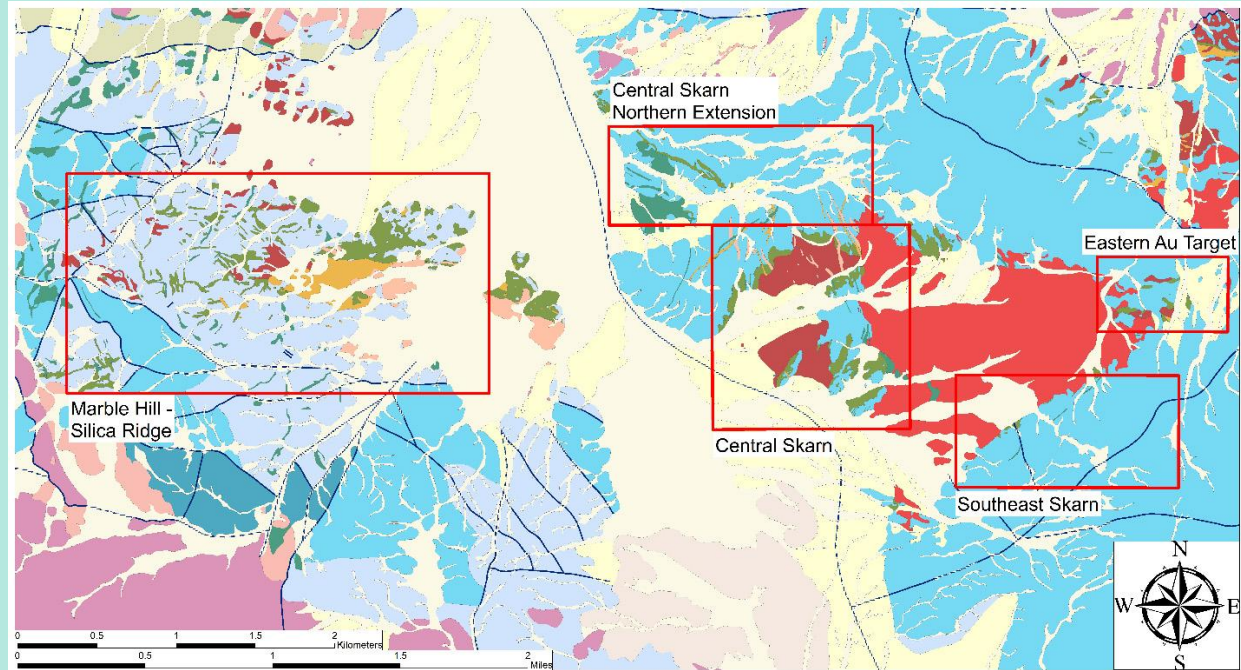
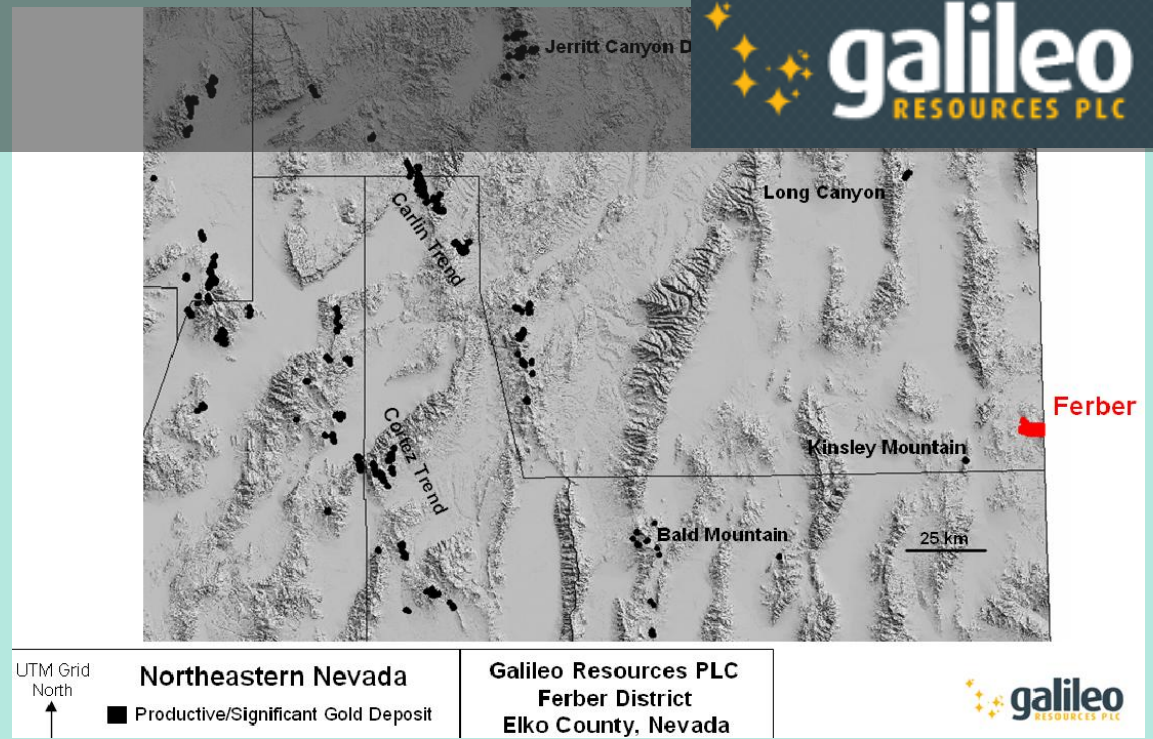
- Terraleach™ geochemical survey results generated **3 Galileo targets**
- The results combined with proximal discoveries by third parties demonstrates the **emerging potential for new discoveries in this under-explored portion of the Kalahari Copper Belt.**

- **PL039 and PL040 targets occupy a similar geological setting to that drilled by Khoemacau Copper Mining coincident with the Mowana Fold axis and Zones 5 and 9 mineralisation together with the recently announced drill intercepts by Arc Minerals on the adjoining Project.**
- Independent external assessment reported that **"the geological and structural setting of the Galileo Fold is almost identical to that of the Mowana Fold and is believed to share the same level of prospectivity."**

# Ferber - Polymetallic Skarn and Porphyry Potential



- Located 40 kilometres south of Wendover in Elko County, Nevada. **Highly prospective for porphyry-related intrusive systems and contact skarn mineralisation.** Further potential identified for **structurally controlled sediment hosted gold** deposits.
- **Rich mining history.** Historic drill intercepts include **12.2m @ 0.83% Cu and 10.7m @ 0.53g/t Au**, while periodic mining included the Martha Washington mine where **production was reported to average 6% Cu, 16% Pb and 14 oz/ton Ag.**
- **100% owned property** - comprises a series of patented and unpatented claims & **land holding recently extended based on positive Phase 1 ground exploration**
- **Royalty and Exploration Agreement with Bronco Creek Exploration Inc (BCE),** a wholly owned subsidiary of Elemental Royalty Corporation (TSX-V: ELE, NASDAQ: ELE)



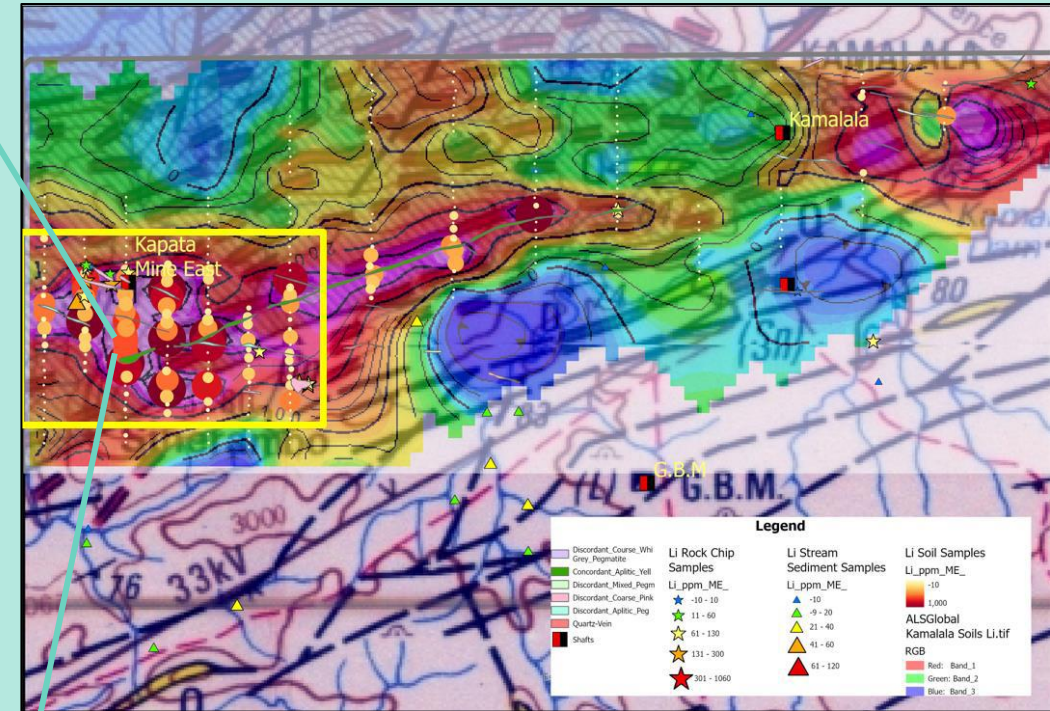
- **Phase 1 Target Generation & drill targeting - complete**
  - **Mapping over a total area of approximately 70km<sup>2</sup>,** including the collection of 109 rock grab samples for assay & licence wide soil sampling
  - **A further 89 claims were staked to extend** the property to the west following the discovery of **mineralised workings and bedrock alteration**
  - Structural Ground gravity survey **highlighted major structures and potential drill targets**
  - **Historical data compilation** identified full airborne and ground magnetic coverage, IP survey and additional drill data
- **0.33% perpetual NSR Royalty granted to BCE upon completion of a targeting report.**
  - Four target areas have been selected focussed on skarn-hosted and porphyry-type mineralisation over a 20 square kilometre area, divided into two priority categories.
  - The proposed Reconnaissance Drilling programme incorporates over 3,000m of core drilling in up to eight holes testing high and medium priority targets.

# Kamativi Lithium & Bulawayo Gold

**1,820km<sup>2</sup> Land Package in Zimbabwe Prospective For Lithium Bearing Pegmatite Dykes & Greenstone Gold, Further REE, Cu, Ni & Zn Potential Identified**

- Kamativi Lithium & Bulawayo Gold, Zimbabwe
- **Galileo holds an 80% interest in the Kamativi Li-Ta-Sn-REE-Cu project and the Bulawayo Au-Ni Project, collectively known as the Sinamatella Licences, located in northwestern and western Zimbabwe respectively.**
- **Multiple exploration targets requiring further work**
- **Substantial gold potential at Bulawayo with large extensions to known gold bearing zones identified, further ultramafic nickel potential**
- **Lithium bearing pegmatite dyke swarms identified at Kamativi extending over 6km of strike, including mineralized drill intercepts of:**
  - **18m wide zoned pegmatite, returning a high-grade core of 4m at 1.03% Li<sub>2</sub>O from 35m downhole, with individual 1m assays peaking at 2% Li<sub>2</sub>O**
- **Licence wide Au, Cu, Li REE, Ni and Zn potential**

Mineralised drill core form Kamativi Pegmatite Dyke

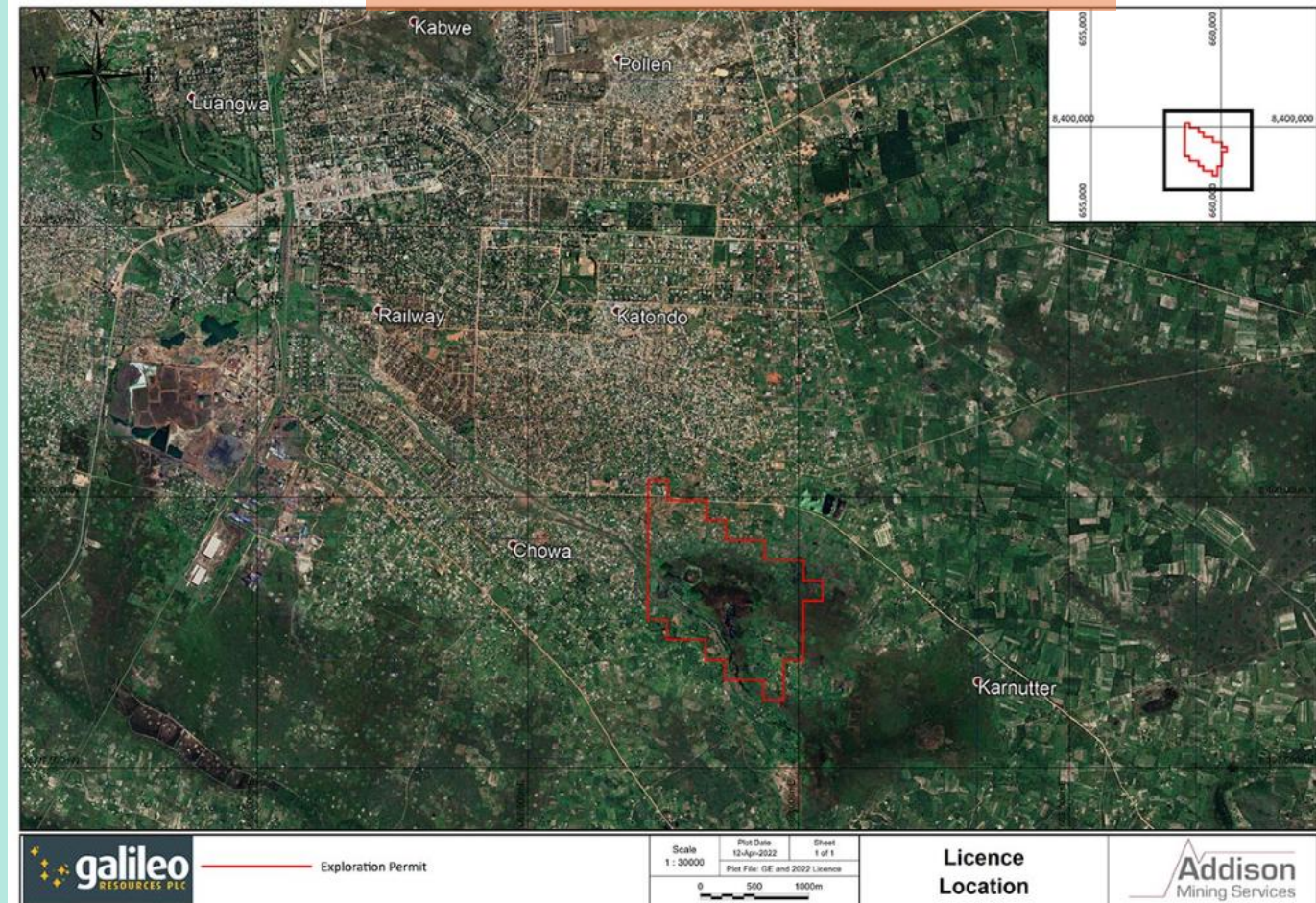


# Kashitu – High-Grade Near-Surface Zinc Mining Potential Defined

- **Zambian small-scale mining licence (SML) (39893-HQ-SML) awarded for a period of ten-years beginning March 2025.**
- The SML is granted over an area where a **high-grade, lenticular, willemite body** was previously exploited close to the surface by historic miners and offers Galileo the potential to progress towards shallow open-pit zinc mining.
- **Advanced plans to co-operatively develop a small-scale mining operation capable of extracting shallow supergene enriched ore to a depth of 1-3m**, including continued stakeholder engagement. Residential livelihood protected.
- Galileo continues to assess the exploration potential of the area, and once priority locations have been identified, shallow drilling on a close-spaced grid for grade control purposes will take place.



Satellite Image of Kabwe & The Kashitu Dambo – licence area in red





AIM:GLR

1st Floor 7/8 Kendrick Mews  
South Kensington  
SW7 3HG, United Kingdom  
T: +44 (0) 207 581 4477

[www.galileoresources.com](http://www.galileoresources.com)

[info@galileoresources.com](mailto:info@galileoresources.com)